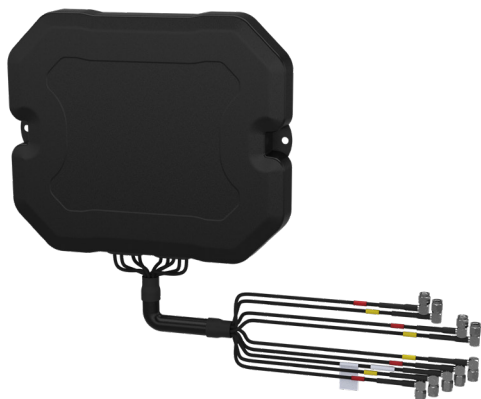


4x4 MiMo 4G/5G Case

Mount Antenna

CASEANT[X]4-6-60[-X]

PANORAMA  ANTENNAS



- Adhesive mount antenna designed for easy installation in cases
- Works when the case is open or closed when mounted in the lid
- 4x4 MiMo 617-960/1427-6000MHz
- Up to 4x4 MiMo WiFi 6e
- Optional active GPS/GNSS - L1 or L1/L5
- Loomed cables with right angled connectors for easy installation

The Panorama CASEANT[X]4-6-60[-X] range is a 4x4 MiMo antenna solution for 4G / 5G specifically designed for deployable cases.

The 4G/5G antenna elements cover 617-960/1427-6000MHz providing a robust communications link to ensure high data rates even in challenging network coverage areas. The efficient element design allows the antennas to work when the case is open or closed.

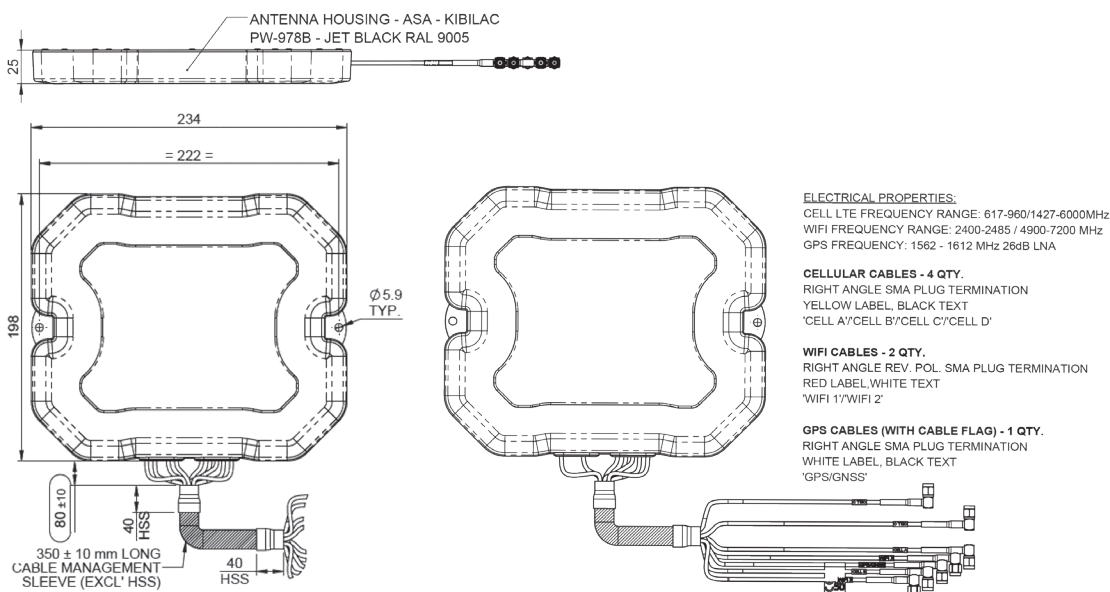
CASEANTG[5]4 variants include a GPS/GNSS module with advanced filtering covering either L1/E1/G1/B1 or L1/E1/G1/B1 & L5. Additional variants also contain 2,3 or 4 WiFi elements which cover 2.4-7.2GHz for WiFi 6e.

The antenna is supplied with integrated low loss flame retardant cables fitted with protective sleeving to assist with routing within the case and right angled connectors for easy installation.

Panorama can provide RF measurement services for case products and design of foam inserts, ducting and other installation collateral upon request. These services are sold separately.

Technical Drawing

CASEANTG4-6-60-D Shown



4x4 MiMo 4G/5G Case

Mount Antenna

CASEANT[X]4-6-60[-X]

PANORAMA  ANTENNAS

Product Data

Part No.					
		CASEANTG4-6-60-Q	CASEANTG4-6-60-T	CASEANTG4-6-60-D	CASEANTG4-6-60
Electrical Data					
Frequency Range (MHz)	Cell /LTE	4x 617-960 / 1427-6000			
	WiFi	4x 2396-7125	3x 2396-7125	2x 2396-7125	-
	GPS/GNSS	1x 1559-1612			
Typical VSWR*	Cell Elements	<2.5:1			
	WiFi Elements	< 2:1			
Isolation (dB)**	Cell Elements	≥ 7 (617-960MHz) / ≥ 12 (1427-1518MHz) / ≥ 12 (1710-2700MHz) / ≥ 20 (3300-6000MHz)			
	Wifi Elerments	>20			
Pattern		Omni-directional			
Impedance		50Ω			
Max Input Power (W)		5			
GPS/GNSS Data					
Frequency Range (MHz)		1559-1612			
Impedance		50Ω			
LNA Gain		26dB			
Voltage / Current		3-5v 17ma Typical			
Polarisation		Right Hand Circular			
Mechanical Data					
Dimensions (mm)	Height	25 (1")			
	Width	232 (13.78")			
	Length	196 (9.1")			
Environmental Specification					
Operating Temp (°C)		-40° / +80°C (-40° / +176°F)			
Radome Material		ASA			
Radome Material Approvals		HB (UL 94) / UL746C F1			
Ingress Protection		IP55			
Mounting Data					
Fixing		3M VHB Adhesive Pad			
Cable Data					
Cable Type		CS30 [Cell and WiFi] / FR RG174 [GPS/GNSS]			
Cable Diameter (mm)		2.8 (0.1")			
Cable Length (m)		0.75 (2.4')			
Termination	4G/5G	4x Right Angle SMA Plug (m)			
	WiFi	4x Right Angle Rev Pol SMA	3x Right Angle Rev Pol SMA	2x Right Angle Rev Pol SMA	-
	GPS/GNSS	1x Right AngleSMA Plug (m)			

*Measured in free space with 0.5m (1.6') of CS30 cable **Worst case isolation measured with 0.5m (1.6') CS30 cable