



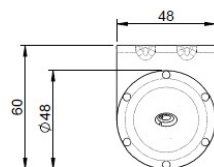
- Cost effective 2G/3G/4G signal booster
- Easy installation
- Wall mount or mast mount

The B4BE range has been designed to provide cost effective coverage booster antennas for 2G/3G/4G devices. The antennas are designed for wall or mast mounting and are weather proof allowing the device to reap the benefits of an antenna mounted in an elevated or external location where the signal is strongest.

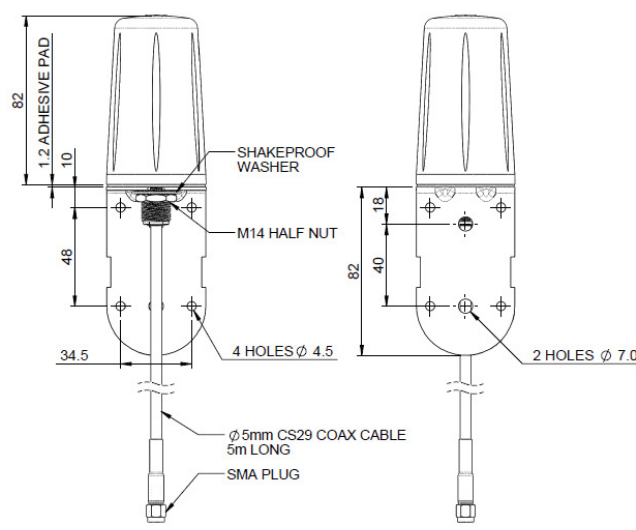
The omni-directional radiation pattern allows the antenna to be quickly installed while the global Cellular / GSM / LTE coverage provided by the antenna allows it to be utilised for 2G / 3G and 4G applications the world over.

These antennas provide an ideal solution for modem devices whether for domestic or business wireless data or for machine to machine applications and connected devices.

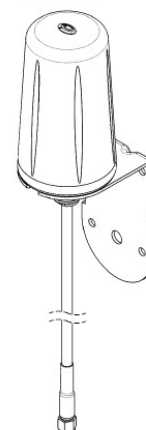
Technical Drawing



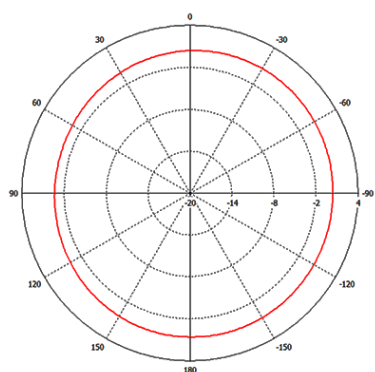
FREQUENCIES.
698 - 960 MHz
1710 - 2700 MHz



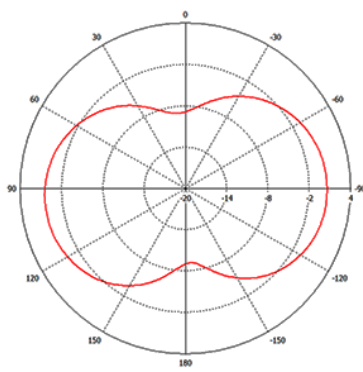
ISO VIEW
SCALE 1:2



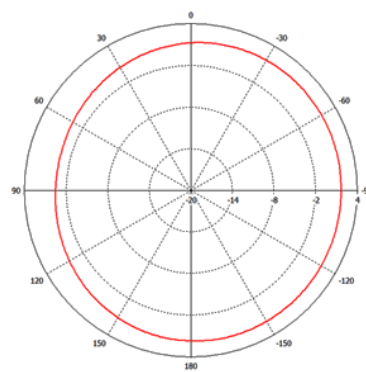
H Plane Plot (700 MHz)



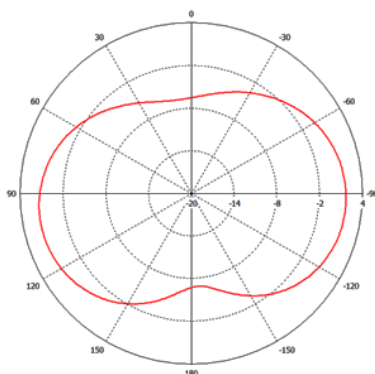
E Plane Plot (700MHz)



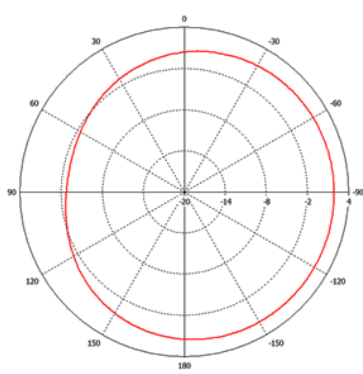
H Plane Plot (800MHz)



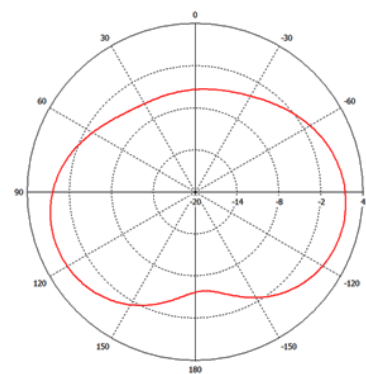
E Plane Plot (800MHz)



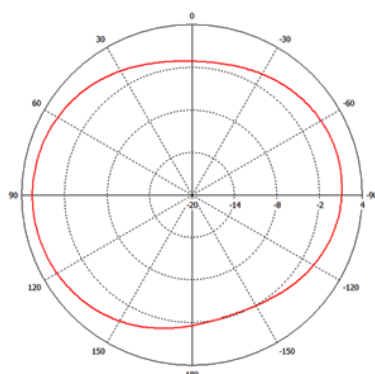
H Plane Plot (900MHz)



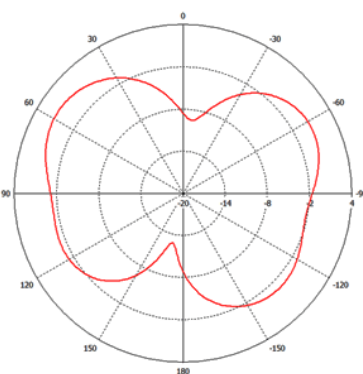
E Plane Plot (900MHz)



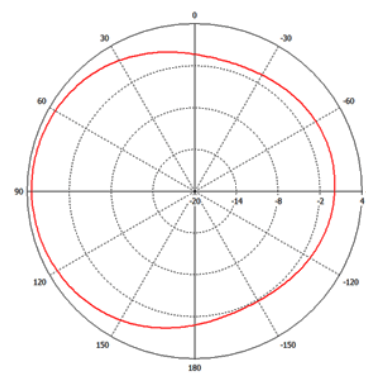
H Plane Plot (1800 MHz)



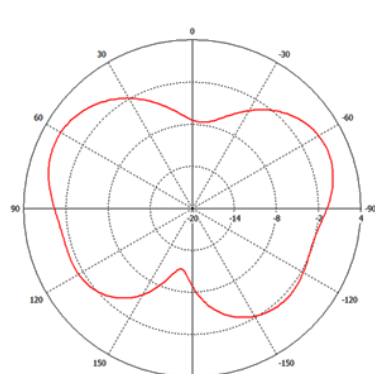
E Plane Plot (1800MHz)



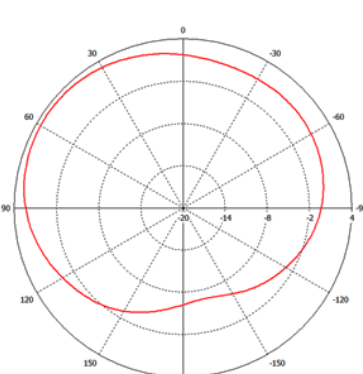
H Plane Plot (2100MHz)



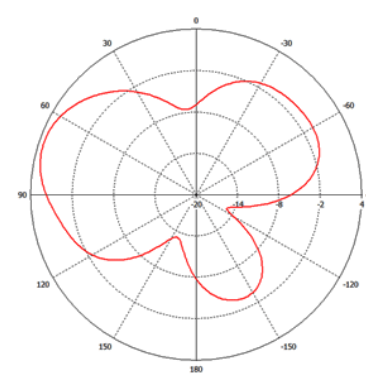
E Plane Plot (2100 MHz)



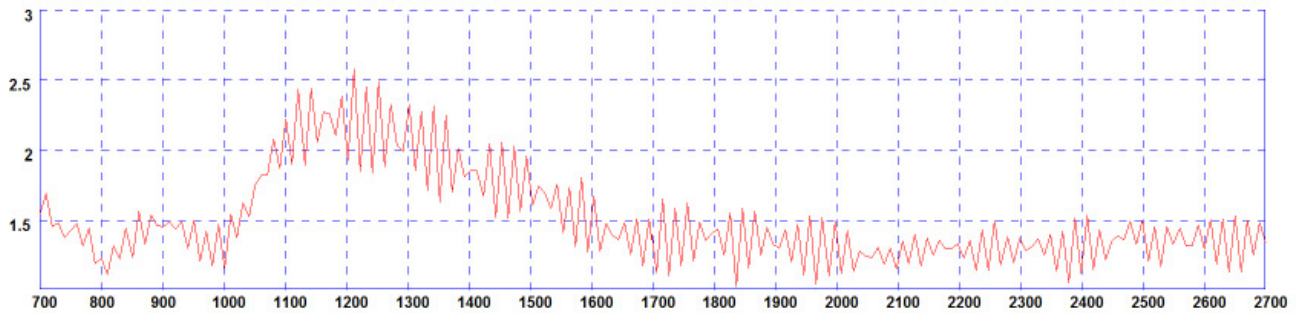
H Plane Plot (2600MHz)



E Plane Plot (2600MHz)



Typical VSWR (B4BE-7-27-5SP)



*Measured with 5m of CS29 cable

| Part No. | | | |
|-----------------------|---------------------------|---|----------------|
| | | B4BE-7-27-5SP | B4BE-7-27-05SP |
| Electrical Data | | | |
| Frequency Range (MHz) | | 698-960, 1710-2700 | |
| Operational Band | | LTE 700 , AMPS / GSM850, GSM900, GSM1800, PCS1900, 3G UMTS, 2.4GHz WIFI, 2.6GHz LTE | |
| VSWR | | < 2.5:1 | |
| Peak Gain: | 698-960MHz | 2dBi | |
| Isotropic | 1710-2700MHz | 4dBi | |
| Radiated Efficiency* | | > 70% | |
| Pattern | | Omni-directional | |
| Polarisation | | Vertical | |
| Impedance | | 50Ω | |
| Max Input Power (W) | | 50 | |
| Mechanical Data | | | |
| Dimensions (mm) | Height Mounted | 164 (6.46”) | |
| | Diameter | 48 (1.89”) | |
| Operating Temp (°C) | | -40° / +80°C (-40° / 176°F) | |
| Material | | A.B.S., Aluminium and Galvanised Steel | |
| Colour | | Black & Natural | |
| Mounting Data | | | |
| Fixing | | Wall mount or Mast mount | |
| Mounting Bracket (mm) | Height | 82(3.2”) | |
| | Recommended Screw Fixings | 4 (0.16”) | |
| | | | |
| Cable Data | | | |
| Type | | CS29 | |
| Diameter (mm) | | 5 (1.9”) | |
| Length (m) | | 5 (16’4”) | 0.5 (19.6”) |

*Excluding cable loss

PANORAMA ANTENNAS
Panorama Antennas Ltd
 Frogmore, London, SW18 1HF, United Kingdom

T: +44 (0)20 8877 4444
 F: +44 (0)20 8877 4477
 E: sales@panorama-antennas.com
 www.panorama-antennas.com

Waiver: The data given above is indicative of the performance of the product/s under particular conditions and does not imply a guarantee of performance. These specifications are subject to change without notice.
 Copyright © Panorama Antennas Ltd. All rights reserved.